

## PHASER – Gas Chromatography Olfactory Port

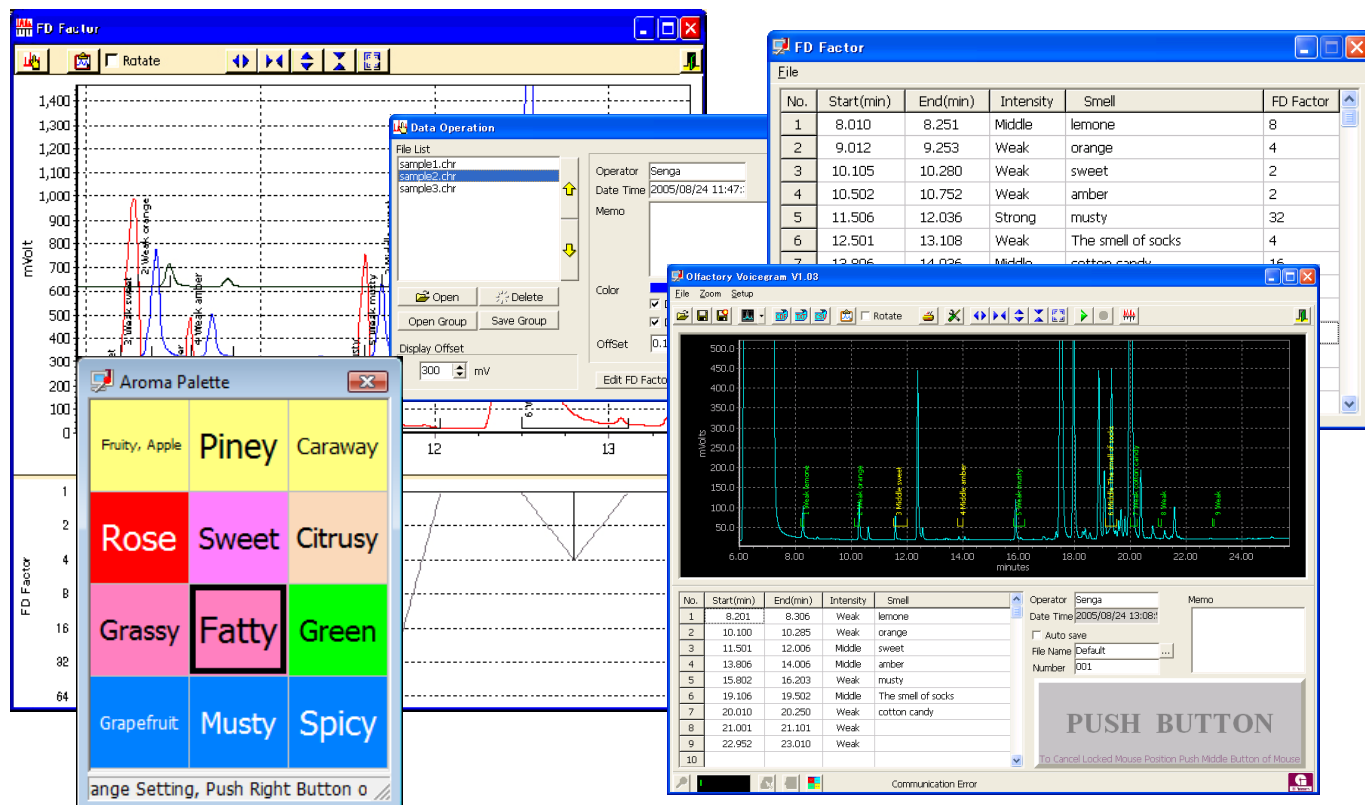
PHASER is an advanced sniffing port, through which an analyst using his/her sense of smell can efficiently sense and identify flavor and fragrance components separated by a gas chromatographic column. A column effluent is directly transferred to a PHASER nose cone through deactivated fused silica tube allowing the operator to smell the compounds that exit the column.

### Why PHASER?

- No-cold-spot design provides possibility to sniff high boiling compounds;
- Transfer line temperature up to 300 °C;
- Operator nose protection by adding moisturized air to sniffing port;
- Easy-connect SilFlow™ micro-channel device as column flow splitter;
- Sitting or standing while sniffing;
- Compact and easy-to-install on any type of GC;
- Voice recording with replay function and voice recognition;



## Software Screenshots



Olfactory Voicegram software features:

- Import MS chromatogram;
- Recording analog detector data during run by mouse click;
- Aroma Palette;
- Voice recording with replay function and voice recognition;

### Controller Specification

Dimensions:	96mm(W)×300mm(H)×230mm(D)
Weight:	approx. 7 kg
Power:	AC100V~240V, 50/60Hz, 300VA
Auxiliary gas:	He or N <sub>2</sub>
Flow control:	Mass-flow control valve
Flow range:	10 ml/min
Maximum operating pressure:	1.7 MPa
Auxiliary air:	Clean air
Flow range:	100 l/min
Maximum operating pressure:	1.0 MPa
Minimum operating pressure:	0.1 MPa

### Transfer line Specification

Dimensions:	
Line:	ø35×600 mm (optional: 1000 mm)
GC coupling:	ø15×100 mm
Transfer line temperature range:	up to 300°C

Distributed by:

ATAS GL International B.V.  
De Sleutel 9  
5652 AS Eindhoven  
The Netherlands  
Tel. + 31 (0)40 254 95 31  
E-mail: info@atasgl.com  
Url: www.atasgl.com