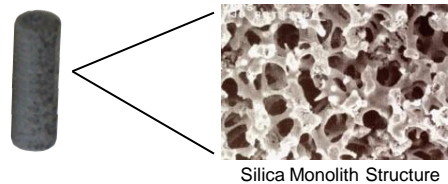


Monolithic Silica Adsorbents

MonoTrap™ TD for Thermal Desorption

Monolithic Material Sorption Extraction (MMSE)

- For Highly Sensitive Analysis
- No Pre-conditioning Needed
- Various Sampling Available
- Fast & Easy



Product Lineup

MonoTrap™ RSC18 TD

➔ Monolith Silica + C18

MonoTrap™ RGC18 TD

➔ Monolith Silica + C18 + Graphite Carbon

New!

MonoTrap™ RGPS TD

➔ PDMS (polydimethylsiloxane) + Graphite Carbon. Excellent heat resistance (recommendation 250C highest 300C) and sensitive analyses for high boiling components.

Only 3 Steps!

1. Open



Already conditioned and ready-to-use MonoTrap TD will be delivered to you

3. Analysis



Insert the MonoTrap TD in a glass tube then operate thermal desorption GC•GC/MS

2. Sampling

Samples:

Solid, Liquid, Atmosphere

Hang the MonoTrap TD in a tedlar bag/vial or float it on the liquid sample to trap the aroma compounds.

No need for pumping to enrich aroma chemicals

● Head Space



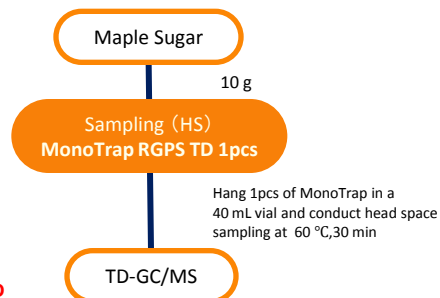
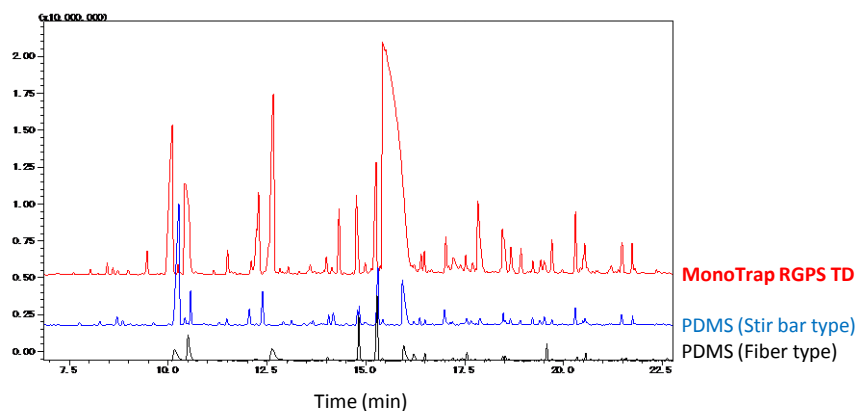
● Stirring



● Passive



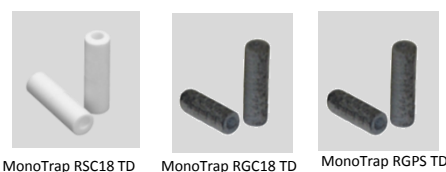
Comparison Data Against Other Market Available Products



Ordering information

MonoTrap for Thermal Desorption

| Description | Function | Qty (ea) | Cat. No. | EUR |
|------------------------------|-----------------------|----------|------------|-----|
| MonoTrap RSC18 TD | C18 | 30 | 1050-73201 | 220 |
| MonoTrap RGC18 TD | C18, Graphite Carbon | 30 | 1050-74201 | 220 |
| NEW! MonoTrap RGPS TD | PDMS, Graphite Carbon | 30 | 1050-74202 | 220 |



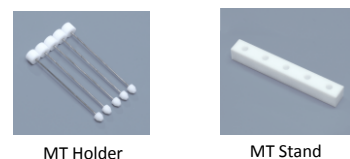
Glass Tubes

| Description | Qty (ea) | Cat. No. | EUR |
|---------------------------|----------|------------|-----|
| Gerstel-MT-S TUBE for TDS | 1 | 1003-75003 | 80 |
| Gerstel-MT-U TUBE for TDU | 1 | 1003-75004 | 80 |
| Linex-MT Tube | 1 | 1003-75001 | 60 |
| T-Dex/ATD/TD-20/-MT TUBE | 1 | 1003-75002 | 80 |



Accessories

| Description | Qty (ea) | Cat. No. | EUR |
|---|----------|------------|-----|
| MT Holder | 5 | 1050-79003 | 100 |
| MT Stand | 1 | 1050-79004 | 70 |
| Clean Pin Hole Septum with vial (40 mL) | 72 | 1050-79006 | 210 |



Passive Sampling Bags

| Description | Volume | Qty (ea) | Cat. No. | EUR |
|----------------------|--------|----------|------------|-----|
| TK-5 MT Passive Bag | 5 L | 1 | 1050-79007 | 60 |
| TK-10 MT Passive Bag | 10 L | 1 | 1050-79008 | 60 |



- We reserve the right to change specifications to make improvements without notice.
- Trademark Information: The following brands or service marks are property of the listed company and/or its subsidiaries.

Gerstel GmbH & Co. KG.
GERSTEL

GL Sciences Inc.
MonoTrap

Manufacturer:

GL Sciences Inc.
6-22-1 Nishishinjuku, Shinjuku
Tokyo, Japan
TEL: +81-3-5323-6620
Web: www.glsciences.com
Email: world@gls.co.jp

Distributor:

ATAS GL International B.V.
De Sleutel 9, 5652 AS Eindhoven
The Netherlands
Tel: +31 40 2549531 Fax: +31 40 2549779
E-mail: info@atasgl.com www.atasgl.com

ATAS GL
international